



HAIR DESIGN

	<i>Master Designer</i>	<i>Associate Designer</i>
Men	\$22.00	\$18.00
-Students (11 to 19)	\$18.00	\$16.00
Women	\$38.00	\$28.00
-Students (11 to 19)	\$27.00	\$22.00
Children (10 and under)	\$16.00	\$13.00
Shampoo and Style	\$23.00	\$18.00
Comb-out	\$12.00	\$10.00
Comb-out w/ curling iron	\$15.00	\$12.00
Up-Style	\$50.00	
Bridal Up-Style	\$60.00	



CUSTOM HAIR COLORING

Standard Color New Growth	\$45.00
(extra product add \$15.00)	
Standard Color Balancing	\$15.00
<i>(Refreshes the ends)</i>	
Additional Colors	\$20.00
Standard Elumen Balancing	\$25.00
Standard Colorance New Growth	\$37.00
(extra product add \$15.00)	
Standard Elumen Color	\$60.00
(extra product add \$15.00)	

Corrective Hair Coloring

We recommend a complimentary consultation to analyze the situation before prescribing a service or estimating a cost. We cannot offer a solution or estimate the cost over the telephone. It could take up to 2-3 salon visits to achieve your desired color results.

**CONSULTATIONS ARE FREE
FOR ANY CONTEMPLATED
SERVICE**



ACCENT COLORING *(Highlighting/Lowlighting)*

Standard Full Foils	\$88.00
(extra product add \$15.00)	
Standard T-bar	\$52.00
(extra product add \$15.00)	
Toner	\$15.00
Individual Foils	\$6.00/each

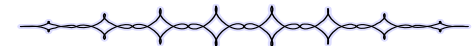
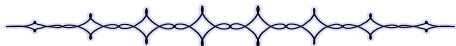
***Color Services by
Master Color Specialist are
an additional ten percent.***

TREATMENTS

Pro Gold Treatment	\$15.00
Color Lock-In Treatment	\$15.00
Clarifying Treatment	\$12.00

TEXTURIZING WAVING

Standard Perm / Wave	\$72.00
(extra product add \$15.00)	
Standard Straightening	\$78.00
(extra product add \$15.00)	
Japanese Relaxer	\$75.00/hr





HAIR REMOVAL

Series of 6

Eyebrows	\$12	\$60
Upper Lip	\$10	\$50
Chin	\$8	\$40
Side Burns	\$8	\$40
Cheeks	\$8	\$40
Jaw Line	\$8 and up	
Under Arms	\$15	\$75
Full Arms & Hands	\$45	\$225
Half Arms & Hands	\$35	\$175
Full Legs	\$65	\$325
Half Legs	\$45	\$225
Bikini Line	\$20	\$100
Chest	\$35	\$175
Back	\$35	\$175
Shoulders	\$15 and up	
Collar Line	\$10	\$50
Stomach	\$35 and up	

Prices are subject to change due to hair density

MAKE-UP

Make-Up Application	\$40-\$50
Make up Lesson	\$50



Studio North uses and recommends the following products:

- ✂ KMS California
- ✂ Goldwell
- ✂ Glo Mineral Make Up

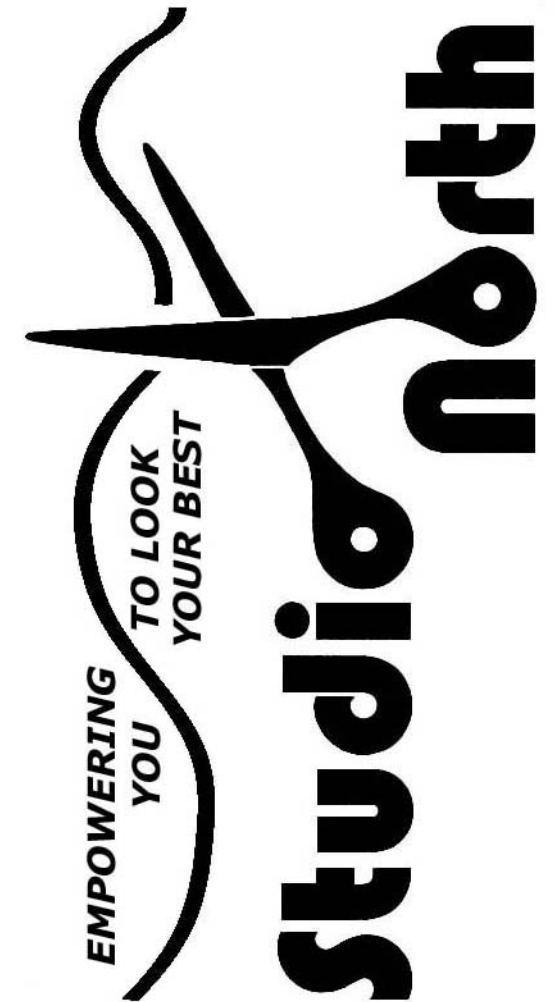
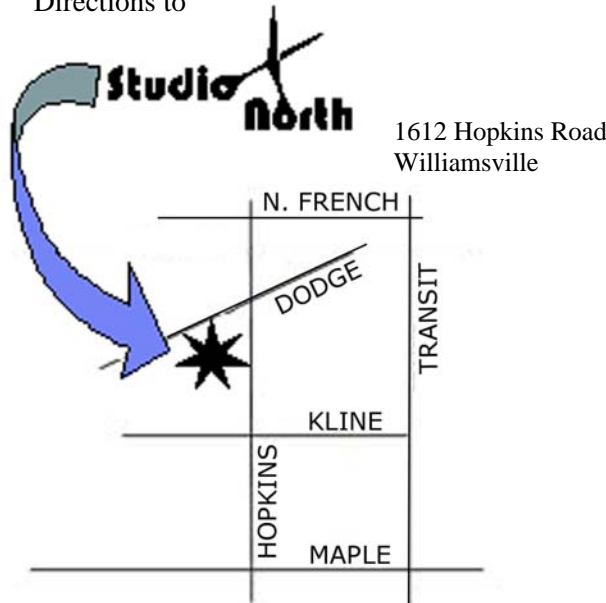
Our Services are guaranteed if: products recommended by stylist and purchased here are used for at-home maintenance.

☞ Prices are subject to change ☞

Salon Hours:

Tuesday	9:30-5:00
Wednesday	9:30-7:00
Thursday	9:30-7:00
Friday	9:30-5:00
Saturday	8:30-4:00
<i>(Closed Sunday and Monday)</i>	

Directions to



HAIR
AND
MAKE-UP
MENU

Studio North Inc.
1612 Hopkins Road
Williamsville

688-4251
info@snsalon.com
www.snsalon.com